

# Tubular and Process Assemblies

F.O.B.: Hannibal, Missouri

## Circulation Heaters

### Engine Preheaters

#### Application Hints

- Mount engine preheaters in horizontal position only (as shown in Figures #1, #2 and #3). Consult your Watlow representative if vertical mounting is unavoidable.
- Mount the heater near or below the lowest point on the engine block. Keep outlet nozzle pointed up, as indicated on the tank.

- Estimate kilowatt requirements with the following formula. First determine the engine displacement, then multiply:

**English**  
Cubic inches X 3 = estimated wattage

**Metric**  
Liters X 183 = estimated wattage

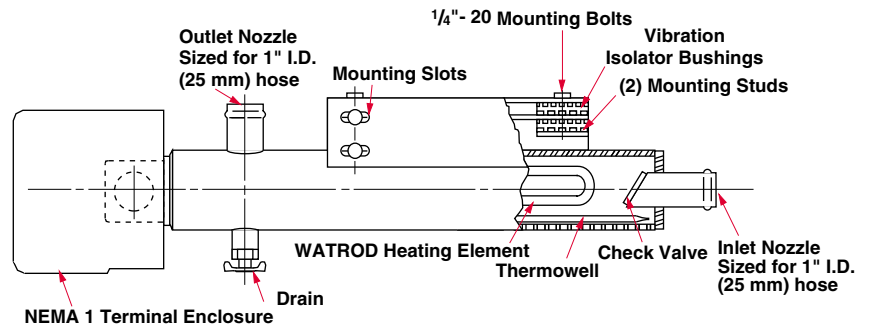
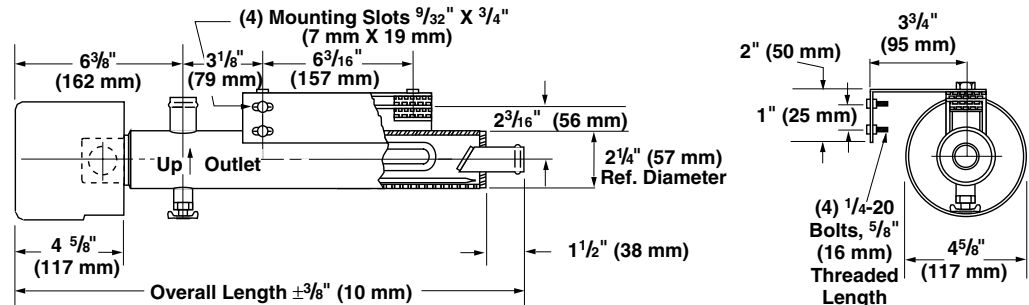


Figure 1



kW	Overall Length Inch (mm)	Code No.			Est. Ship.	
		120/240V~(ac) 1-Phase	208V~(ac) 1-Phase	240/480V~(ac) 1-Phase	lbs	(kg)

#### Application: Ethylene Glycol/Engine Coolant

1.13	20% (530)	CPBPB6S12	CPBPL2S12①		12 (6)
1.50	20% (530)		CPBPB2S12①		12 (6)
1.69	20% (530)		CPBPM2S12①		12 (6)
1.88	20% (530)		CPBPN2S12①		12 (6)
2.00	20% (530)	CPBPC6S12	CPBPD2S12①		12 (6)
2.25	20% (530)	CPBPD6S12			12 (6)
2.25	26 1/16 (678)				15 (7)
2.50	20% (530)	CPBPE6S12			12 (6)
3.00	26 1/16 (678)		CPBPF2S12①	CPBPF7S12	15 (7)
3.75	26 1/16 (678)		CPBPG2S12①		15 (7)
4.00	26 1/16 (678)			CPBPH7S12	15 (7)
5.00	26 1/16 (678)			CPBJ7S12①	15 (7)

All preheaters are Stock unless otherwise noted.

① Standard

#### Availability

**Stock:** Same day shipment

**Standard:** Four weeks