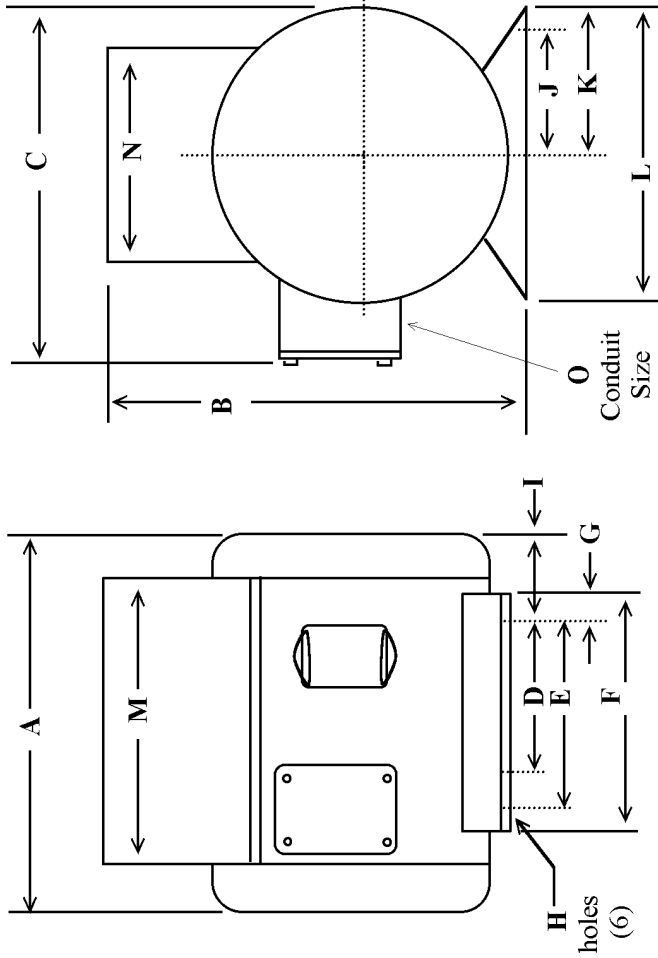


PHASE-A-MATIC, INC.

39360 3rd St. East, Suite 301 • Palmdale, Ca. 93550-3255
 PH# 661-947-8485 • FAX# 661-947-8764
 www.phase-a-matic.com
 EMAIL: info@phase-a-matic.com

ROTARY CONVERTER DIMENSIONS

DRAWING NO: TD211 - A DATE: 4-28-08



DIMENSIONS SHOWN IN INCHES

MODEL	A	B	C	D	E	F	G	H	I	J	K	L	M	N	O	SHIPPING DIM.
R-1	8 1/2	9 1/4	8 5/8	4	5	6	1/2	11/32	1 3/4	2 3/4	3 1/4	6 1/2	5 3/4	4 1/4	3/4	15 x 10 x 10
R-2	9 1/2	9 1/4	8 5/8	4	5	6	1/2	11/32	2 1/4	2 3/4	3 1/4	6 1/2	5 3/4	4 1/4	3/4	15 x 10 x 10
R-3	10 11/16	11	9 5/8	4 1/2	5 1/2	6 1/2	1/2	13/32	2 19/32	3 3/4	4 5/16	8 5/8	7 1/2	5 1/2	3/4	19 x 12 x 13
R-5	11 1/2	11	9 5/8	4 1/2	5 1/2	6 1/2	1/2	13/32	3	3 3/4	4 5/16	8 5/8	7 1/2	5 1/2	3/4	19 x 12 x 13
R-7	13 9/16	14 1/2	12 1/4	5 1/2	7	8	1/2	13/32	3 9/32	4 1/4	4 3/4	9 1/2	9 1/2	6	3/4	16 x 16 x 16
R-10	13 9/16	14 1/2	12 1/4	5 1/2	7	8	1/2	13/32	3 9/32	4 1/4	4 3/4	9 1/2	9 1/2	6	3/4	16 x 16 x 16
R-15	17 1/8	17	14 3/4	8 1/4	10	11 1/4	5/8	17/32	3 9/16	5	5 5/8	11 1/4	11	6 3/4	1	31 x 24 x 21
R-20	17 1/8	17	14 3/4	8 1/4	10	11 1/4	5/8	17/32	3 9/16	5	5 5/8	11 1/4	11	6 3/4	1	31 x 24 x 21
R-25	20 3/8	18 1/4	19	9 1/2	11	12 1/4	5/8	17/32	4 11/16	5 1/2	6 1/8	12 1/4	12 1/2	8 7/8	1 1/2	31 x 24 x 21
R-30	20 3/8	18 1/4	19	9 1/2	11	12 1/4	5/8	17/32	4 11/16	5 1/2	6 1/8	12 1/4	12 1/2	8 7/8	1 1/2	31 x 24 x 21
R-40	22 3/4	20 1/8	21	9	12	13 1/2	3/4	21/32	4 3/4	6 1/4	7	14	13	10 7/8	2	31 x 24 x 24 1/2
R-50	22 3/4	20 1/8	21	9	12	13 1/2	3/4	21/32	4 3/4	6 1/4	7	14	13	10 7/8	2	31 x 24 x 24 1/2